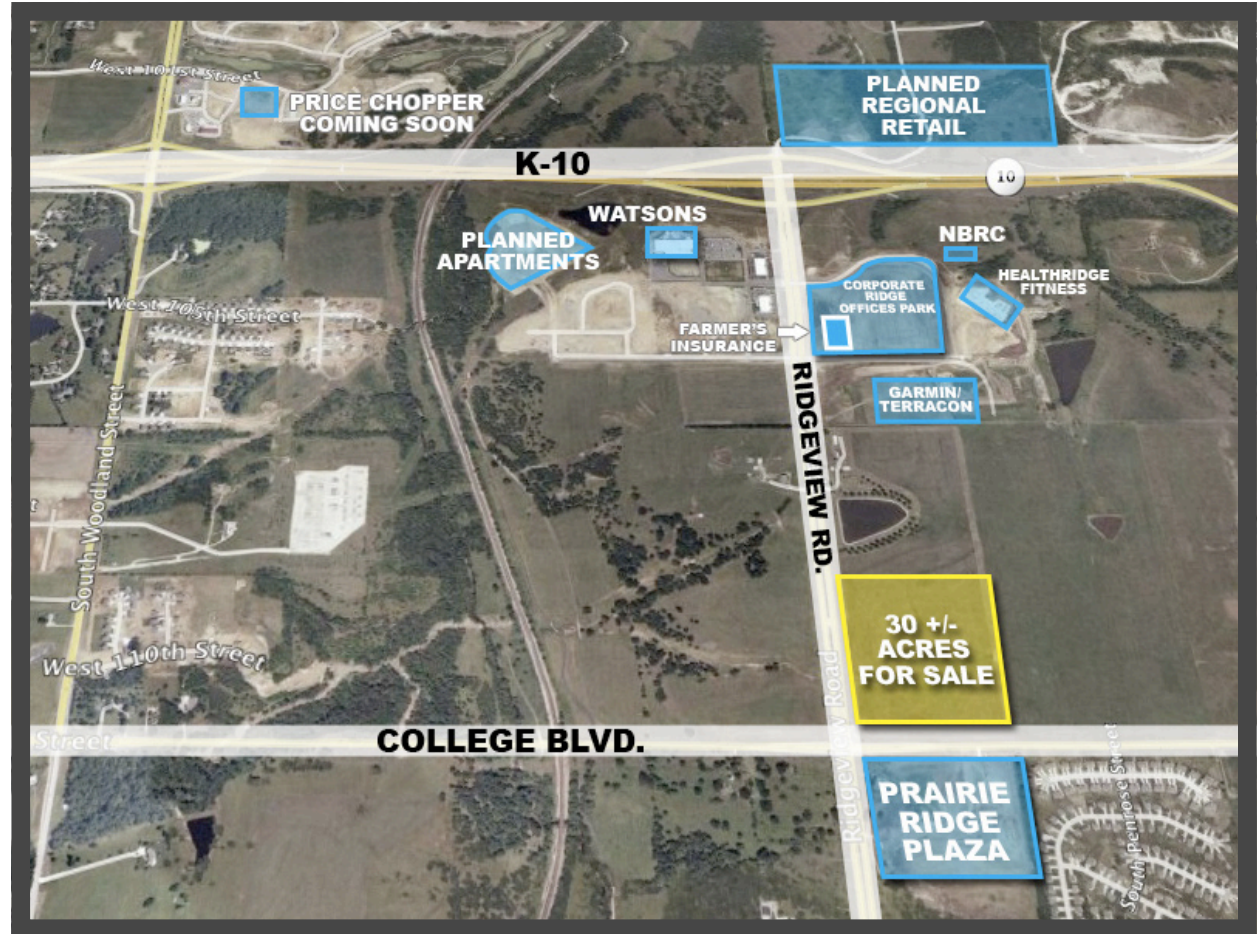


Heise-Meyer, LLC
COMMERCIAL REAL ESTATE

EXCELLENT DEVELOPMENT OPPORTUNITY

Olathe, Kansas

- High growth corridor in Johnson County.
- Great Corporate neighbors
- All utilities serve the site
- Planned office zoning
- Prestigious College Boulevard address



For more information contact:

Rob Heise

p. 816.251.4791
c. 913.209.9201
e. rheise@heise-meyer.com

John Stafford

p. 816.251.4782
c. 913.461.5229
e. johns@heise-meyer.com

Heise-Meyer Properties

200 NE Missouri Rd., Suite 100
Lee's Summit, MO 64086
p. 816.251.4600
f. 816.251.4650

VISIT US ONLINE
HEISE-MEYER.COM